

VAS / RAC Theory

- **By Dr. Paul Nogier**
- **Presented by Dr. Andy Roesti**



Different Names

- **RAC: Réflex Auriculo Cardiac** (1945 Leriche
1968 Nogier)
- **RAC: Réponse Autonome Circulatoire**
- **ACR: Arterial Cardiac Reflex** (Kenyon)
- **ART: Arterial Resonance Test** (Wiebicke)
- **VAS: Vaso Autonomic Signal** (De Sousa)
- **Chinese subjective Pulse Diagnosis**



VAS: Vaso Autonomic Signal

- No information of a standing wave
- Not a reaction of the peripheral glomi carotici, regulating blood flow and temperature
- Its a variability of the heartbeat
- Its a variability of blood pressure in the time and not anymore in the length of measurement



Verification of VAS by means of a „sensory jacket“ of the MIR aerospace project

- Plethysmographical blood pressure curves
- Electrocardiogram
- Seismocardiogram: dorsal-ventral distance
- Ballistocardiogram: change of body length
- Carotis pulse, radialis pulse, finger pulse
- Breathing frequency



VAS proved 2008

- Dr. Gerard Fiches from France could now prove the VAS by means of the Finometer Pro apparatus with an additionally computer (Expert Seminar Davos 2008)
- Email: contact@ensaaf.ch.
- Tel. +41 79 283 60 02



VAS is a sympathetic- and parasympathetic phenomenon

- **The control of the peripheral blood flow is regulated by different mechanisms:**
- **The sympathetic nerve system with the Alpha- and Beta- receptors or the two hormones: Adrenalin and Noradrenalin**
- **The parasympathetic nerve system and Acetylcholin**
- **The vaso-motoric centres with Kallikrein and Bradykinin**
- **Axon-reflexes, etc.**



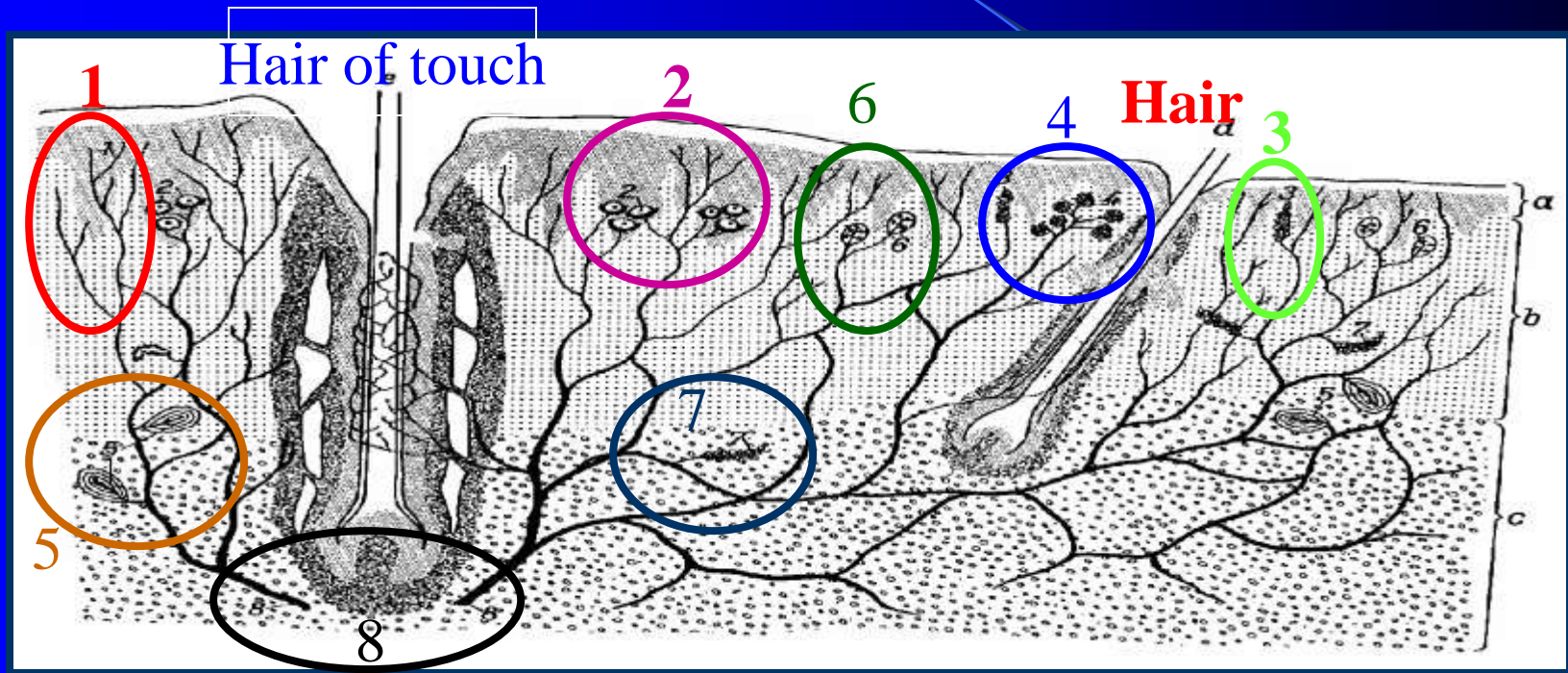
VAS Vaso-Autonomic-Signal

- VAS is a neuro-vegetative processing and adaptation signal, due to the variation of myocardial actions
- Peripheral stimuli are answered by the central nerve system
- VAS is produced through the variability of the heartbeat
- The heart is no pump, its an intermittent amplifier of the bloodstream



The Skin as sense Organ

from Nickel-Schummer-Seiferle



1. Free nerve endings
2. Merkel touchcells
3. Meissner bodies
4. Krause endspikes
5. Vater- Pacini lamellabodies
6. Golgi-Mazzoni lamellabodies
7. Ruffini bodies
8. Sensibel nerves

Thermo-, mechano- and painreceptors in the Skin

- **Free nerve ending, coat- and sinus hairs** regulating temperature and the sensibel-sensoriell aspect (Capillary fibrisses of cats, Merkel sense cells of pigs)
- **Nerve ending bodies: Meissner- and Grandry-bodies:** Small bulb-, disc-, or firecone like sensoriell cells
The sensible-sensorial **Meissner-Bodies** react on the speed of the pressure variability
- **Ending spikes: Krause-endingspikes** in the epidermis



- **Vater-Pacini lamellabodies:** regulating superficial and deep inside sensibility and blood pressure, mechanoreceptors in the mesenterium, regulating movements of stomach and intestines. The sensible-sensorial **Pacini-Bodies** register the acceleration of the pressure variability Both (Meissner- and Pacinibodies) may register qualitative and quantitative aspects of the arterial pulse
- **Golgi-Mazzoni and Ruffini lamella bodies:** in the cutis and subcutis as very important receptors of the superficial sensibility of men and animals



Provoking VAS Signals

● Significans of pos. VAS: $p < 0.01$

(The significance was examined by a non parametric Wilcoxon-Signed-Rank-Test)

- Clapping hands: 60 %
- Heinelamp: 40 %
- 3V-Hammer: 25 %
- Toxic Vial: 20 %
- Laser: 15 %
- Placebo: 7 %

VAS qualitative classification was divided into three categories:

1. VAS noticable
2. VAS well noticeable (average)
3. VAS very well noticable

All types of stimulation show a slow-down of the heart rate at first, which is a sign of **vagal defend reaction** and secondly a **sympathetic artery counter action or balancing modality** which leads to a short increase of the pulse Amplitude in the proximal parts of the arterial blood vessels

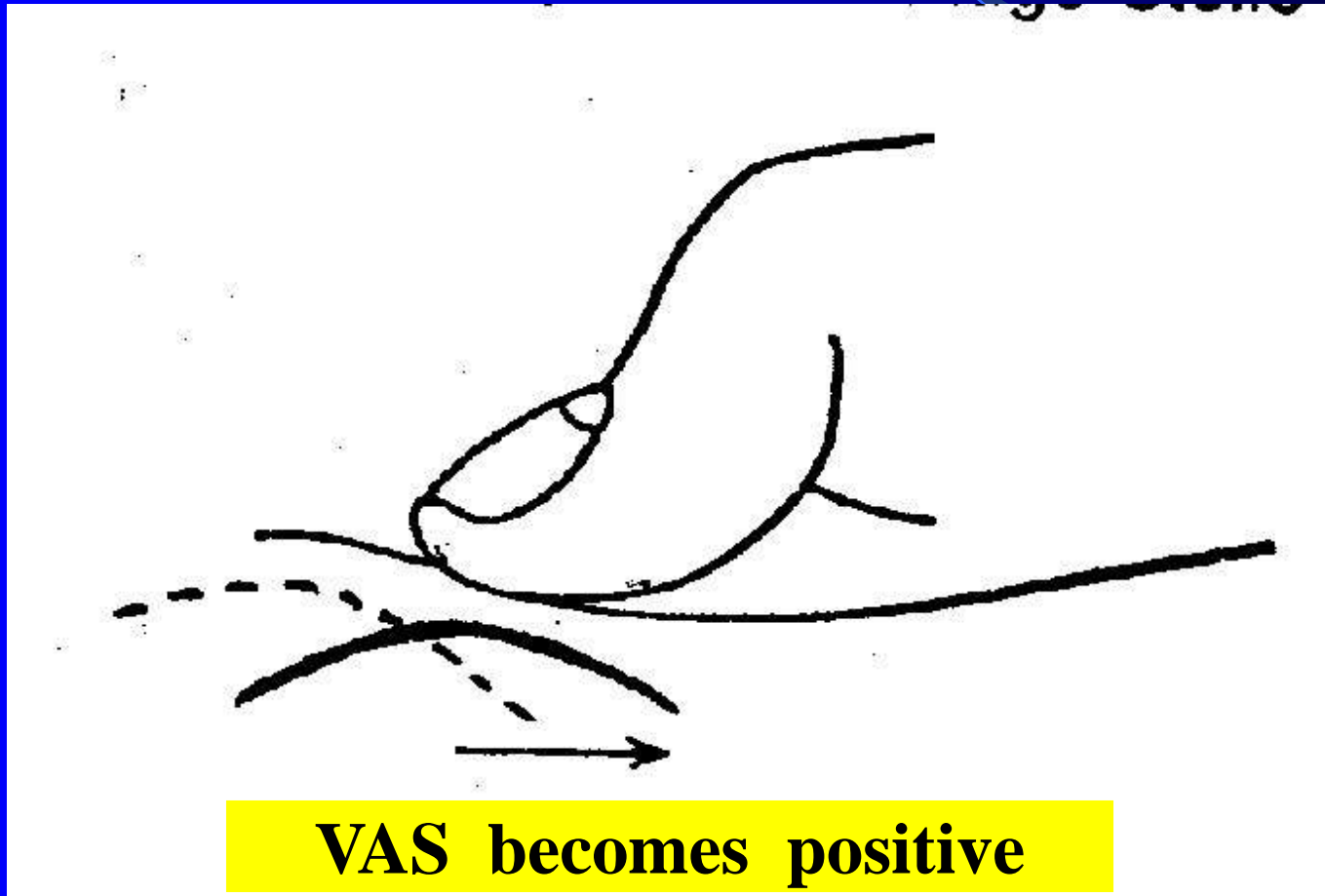


Detecting the VAS Signal

- **One Finger Method (Yes-No-answer)**
 - With the Thumb at the Acupuncture point LU 7
 - With the Indexfinger at the Acupuncture points ST 9 or SI 19
- **Two Finger Method (Yes-No-answer)**
 - With the Index- and the Middle Finger at the Acupuncture point LU 7. Similar to the TCM three finger method
- **Three Finger Method (58 different Qualities)**
 - With the Index-, the Middle-, and the Ring-Finger at the radial artery (TCM)



Detecting VAS with the tip of the thumb (one finger method)



VAS becomes positive





**One finger
method with
the index**

**Direct
VAS pulse
control
SI19**





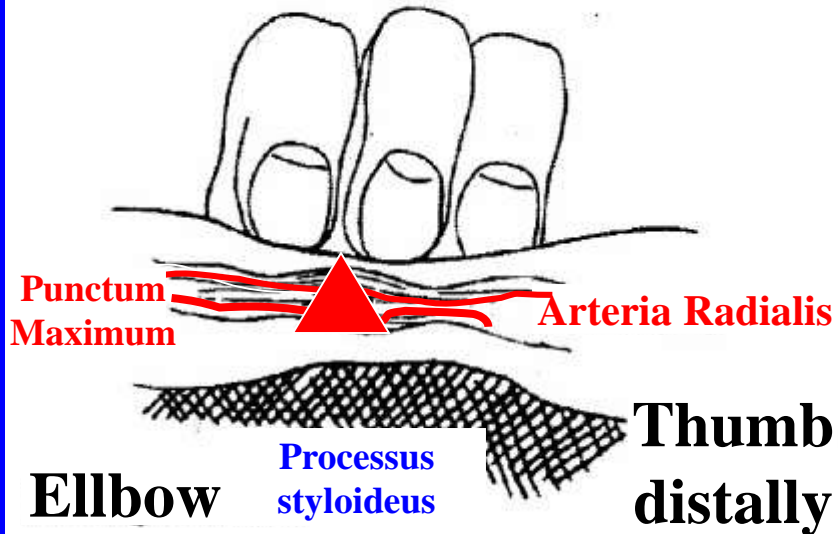
**One finger
method with
the Index**

**Direct
VAS pulse
control
ST09**



VAS Palpation: Two / Three Finger Method

Wrist Intersection





Indirect two/three finger VAS pulse control





Indirect two/three finger VAS pulse control



Conclusion: VAS measurement by technical equipment is far less sensitive than the subjective detection of a trained therapist

- VAS measurement by technical equipment was very much disturbed by **breathing**, especially on the Seismo- and Ballistogram and carotis pulse. It took an extremely effort to differ between physiological pulse-irregularities and VAS signals. Even a special Computerprogramm developed for the MIR experiments was involved
- The skin with all its sensors is very much more sensitive to the VAS phenomenon



Good Luck wishes Andy



Acupuncture in Praxis



Presented
by



Andy Roesti, Switzerland

The Aura ≡ Electromagnetic Emanation

- **The Aura of any creature is the cybernetic light emanation of the coherent polarised photon-pool of the cell-nuclei**
- **Fermions and Bosons are special oscillating conditions of the ethereal vacuum**
- **The Aura consists of electrical-, magnetical-, electromagnetical-, acoustic- and Laser emanation**





There are different aspects of the Aura



- The physical-, aetherical-, emotional- and mental body
- Therapeutically we can influence this nonmaterial aspect of any creature e.g.
- Aura-Somas, Pomanders, Master-Quintessences, Intuition and Instinct
- The Aura can be measured in it's quantitative and qualitative aspect by means of a Reflecting-Polaroid-Filter

- The quantitative aspect of the Aura is the distance from the patient to the Reflecting-Polaroid-Filter
- In an oscillating patient the Aura ranges between 5 to 30 cm
- In a healthy or balanced horse e.g. the Aura emanates for approximately 1 m
- The qualitative aspect of the Aura is the deviation from the Orthopathy in $<^{\circ}$
- In a sick patient we always deal with a Heteropathy of 15° to 45° till 90° in cancer



Aura- / Electro-Magnetic- Emanation Quantitative Aspect



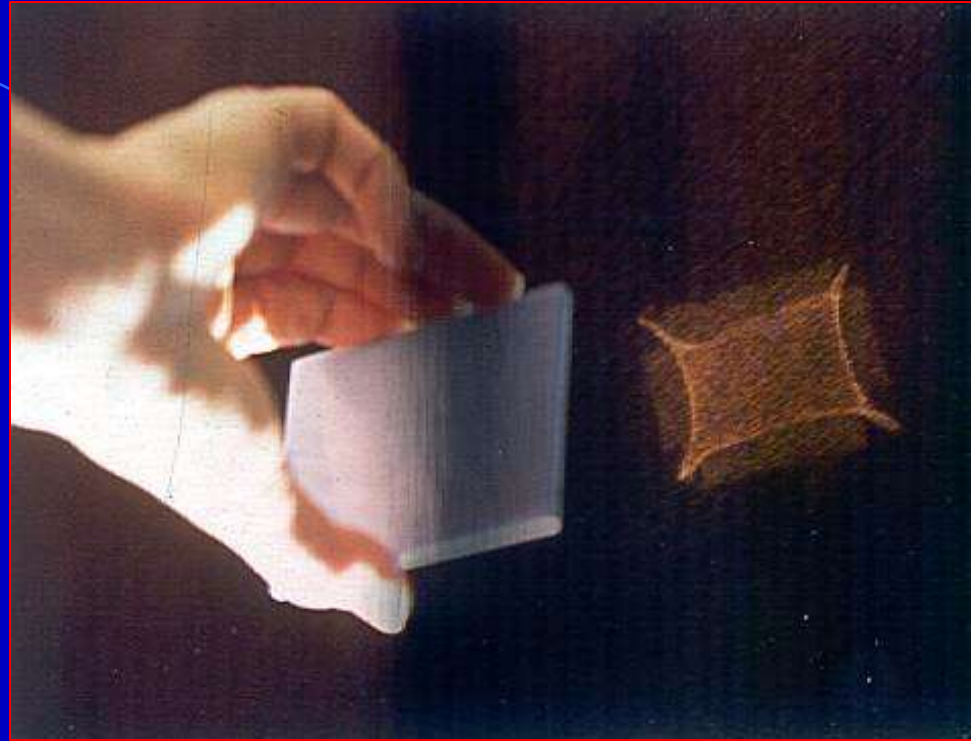
cm

Reflecting
Polaroid Filter





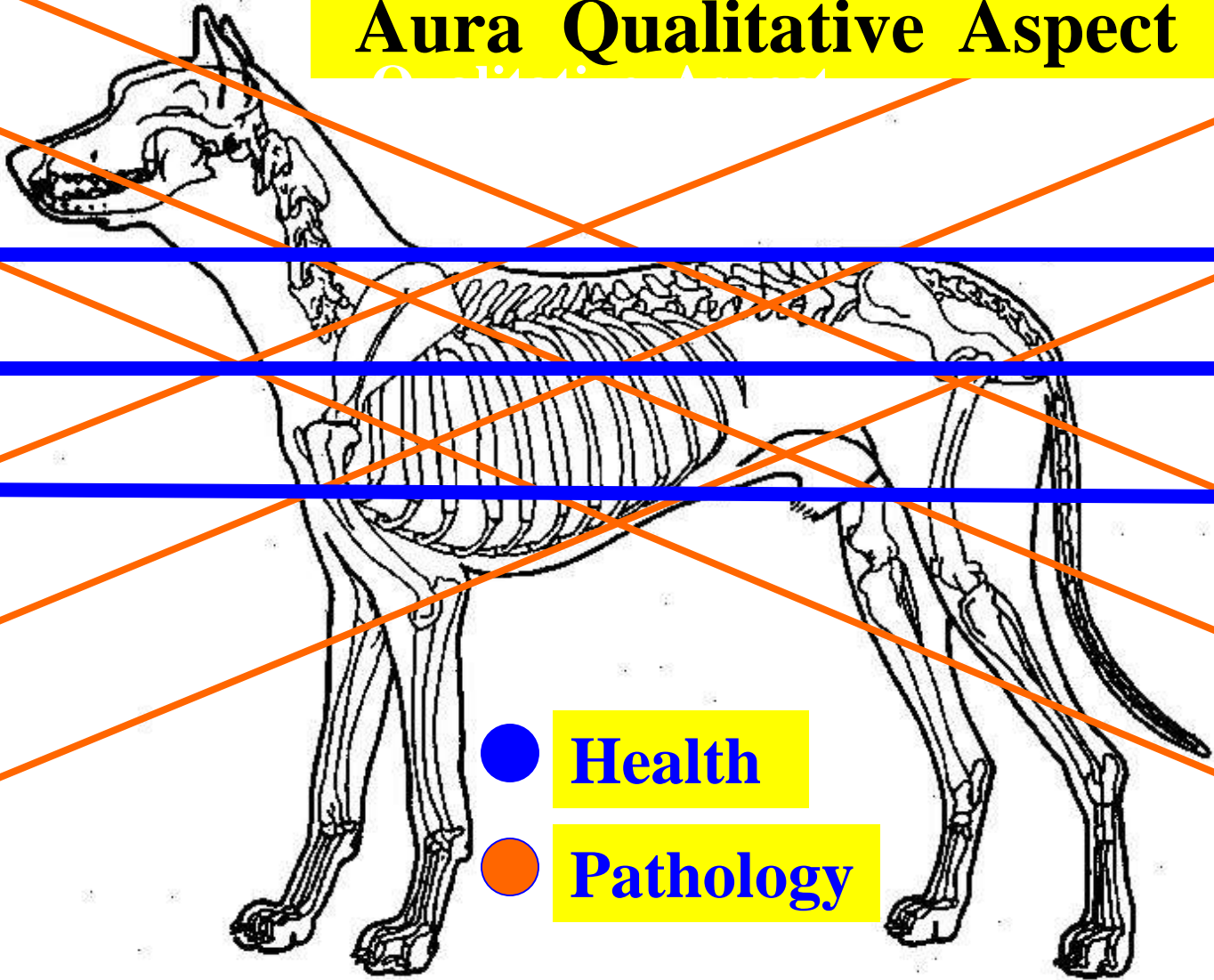
Aura-Kirlian-Photography



**Quantitative Aspect of the Aura
Measuring by means of
the Reflecting-Polaroid-Filter**



Aura Qualitative Aspect



● Health

● Pathology

Oscillation Definition

- Normally we obtain always the same reflectory answer, whenever the same stimulus is provoking the bodies surface. On the other hand we obtain in an oscillating body always a different reflectory answer
- Aetiologically it is supposed to be a disturbed irritation of the formatio reticularis in the brain stem, which is provoked through manifold exogenic, endogenic, iatrogenic, hidden and mute disturbancy focus
- Often we find fatal combinations of different disturbancy fields



Anti - Oscillation

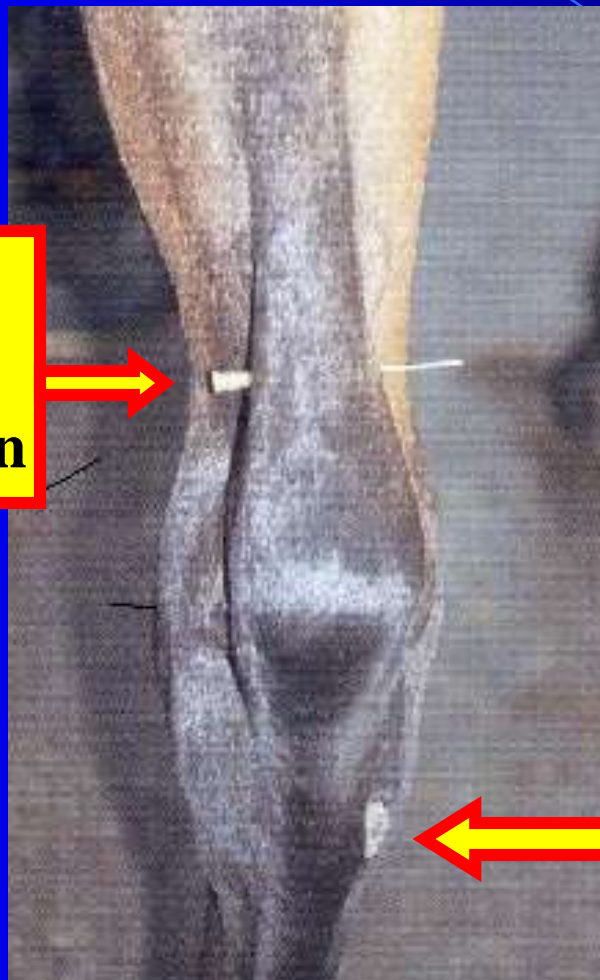
- **Yintang, EX-HN3**
- **KI03, Source Pt of KI Meridian, mostly together with BL60. Single-Needle-Technique**
- **Californian Flower Essences: Black Berry, Star Thistle**
- **Self Heal: SI07-1**
- **Homœopathic / Isopathic Treatment**
- **Fr 9592 Hz**



Checking Yintang for Oscillation



Single Needle Technique acc. to Andy



Sting the
needle underneath
the Achilles Tendon

KI03

BL60

Rear Chesunt
is medial



Inversion Definition

- Inversion is a reflectory blockage of the Ggl. stellatum, or a mechanical blockage of the first rib
- This causes a complete exchange of the reflectorial behaviour of the sympathetic and parasympathetic areas of the body
- The swimming trunk area and the area above the clavicle becomes sympathetic and the rest of the body, below the clavicle, becomes parasympathetic



Inversion



Local sweating in front of the shoulder blade after a race indicates pain and Inversion



Anti - Inversion

- **3E 15, LI 16:** Ggl. Stellatum, local Pts
Mesotherapy: e.g. 5cc SeE + 5cc Lidocain 2%
=> 10cc SeE/Lidocaine at 1%, or proper, classical
Neuraltherapy: 5cc Xyloneural® 1%
- **PC 6:** Front chestnut, Cardinal Pt, Luo Pt =>
TH 4: (endocrine pancreas/insuline): opens the
extrameridian Yin Wei Mai. Dry needeling or
Mesotherapy, (Res. Californian Flower Essence:
Quacking Grass)
- **Homœopathic / Isopathic Treatment**



Inversion - Mesotherapy



Inversion - Chiropractically



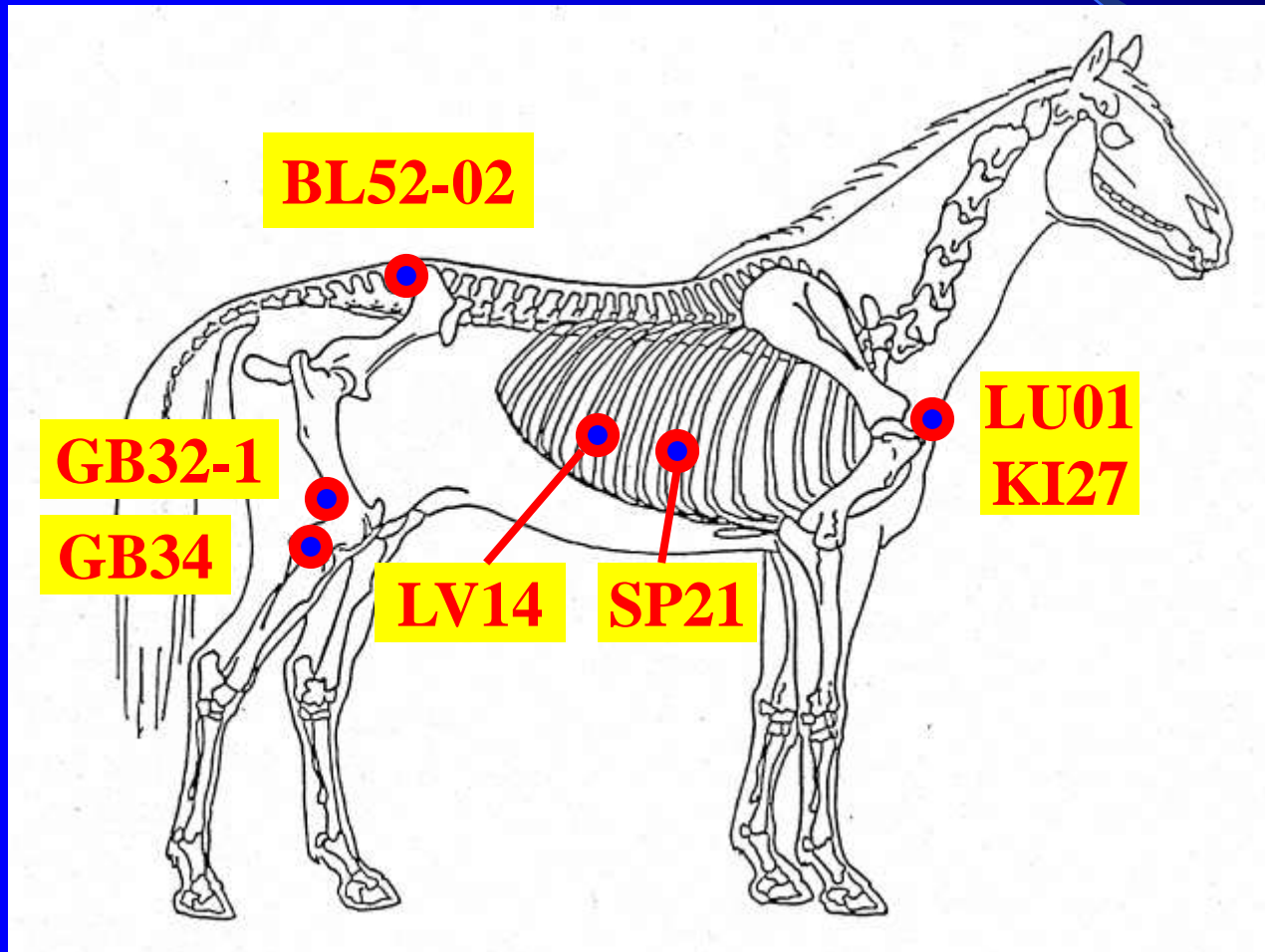


Diagnostical Points for Herpes etc.

- **Rhino-Pneumonitis-Neurotrophic-Herpes Syndrome: Pt BL52-02: midway of a suggested line from Baihui→Tuber coxae**
- **Influenza: Pt LU01 (Res. Bachflower Mimulus), KI27 (aside the cartilago praesterni)**
- **Babesiosis: Pt LV14 (Res. Bachflower Vine or Calif. Flower Ess.: Californian Puppy), SP21 (Res. Lexotanile, Bach flower Aspen)**
- **Tetanus: Pt GB34 (Master Pt of Muscles, Influential Pt of Tendons)**
- **Equine Protozoal Myelitis Syndrome (EPM): Pt GB32-1, (70% more right rear)(Cain)**



Diagnostical Viral Cheque Points

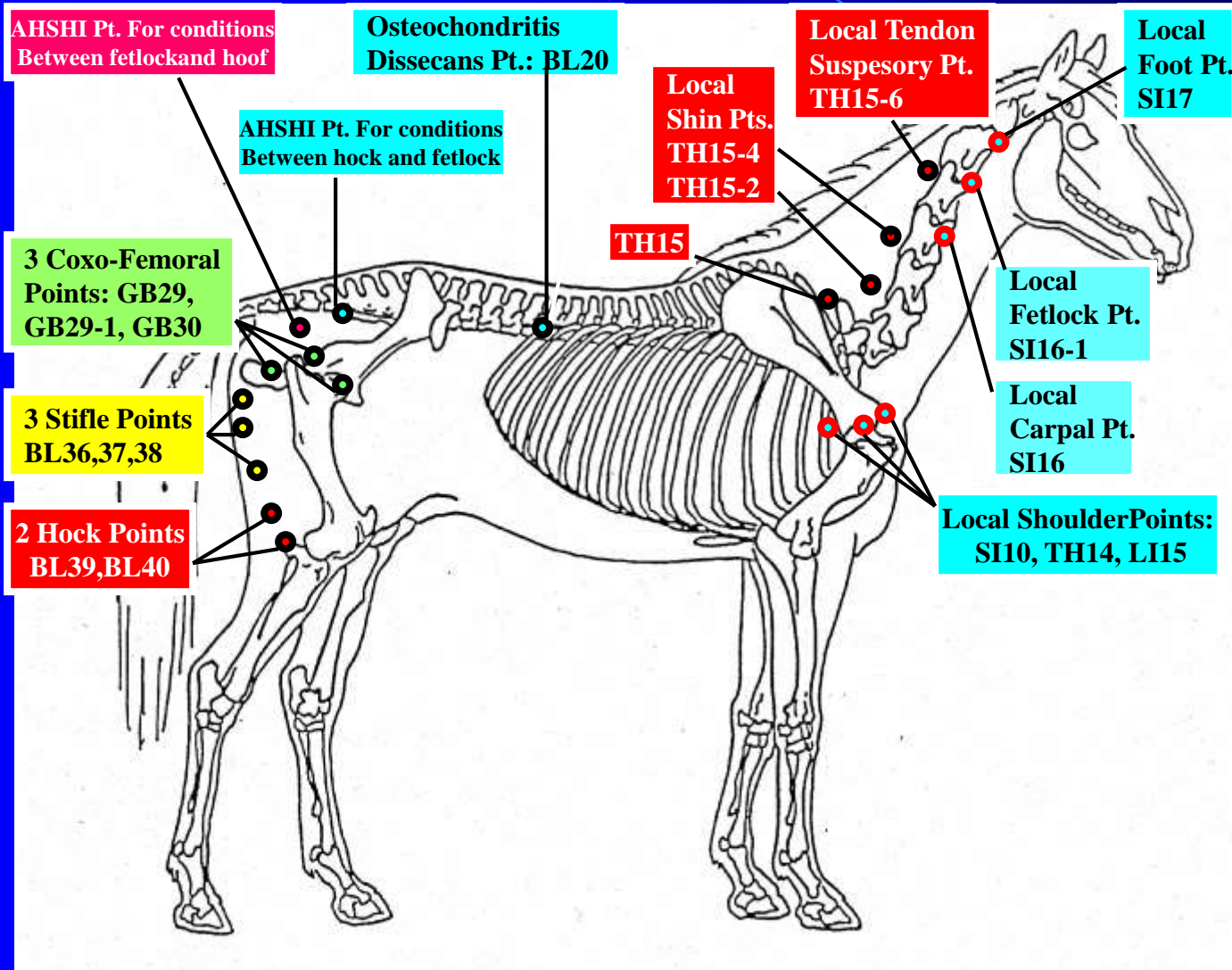


The Fifth Limb

- Without deblocking all vertebrae of the neck, you will always have troubles with your diagnostical and therapeutical procedure
- Therefore control the Mirror Points of the neck
- Deblock them Mesotherapeutically or Chiropractically

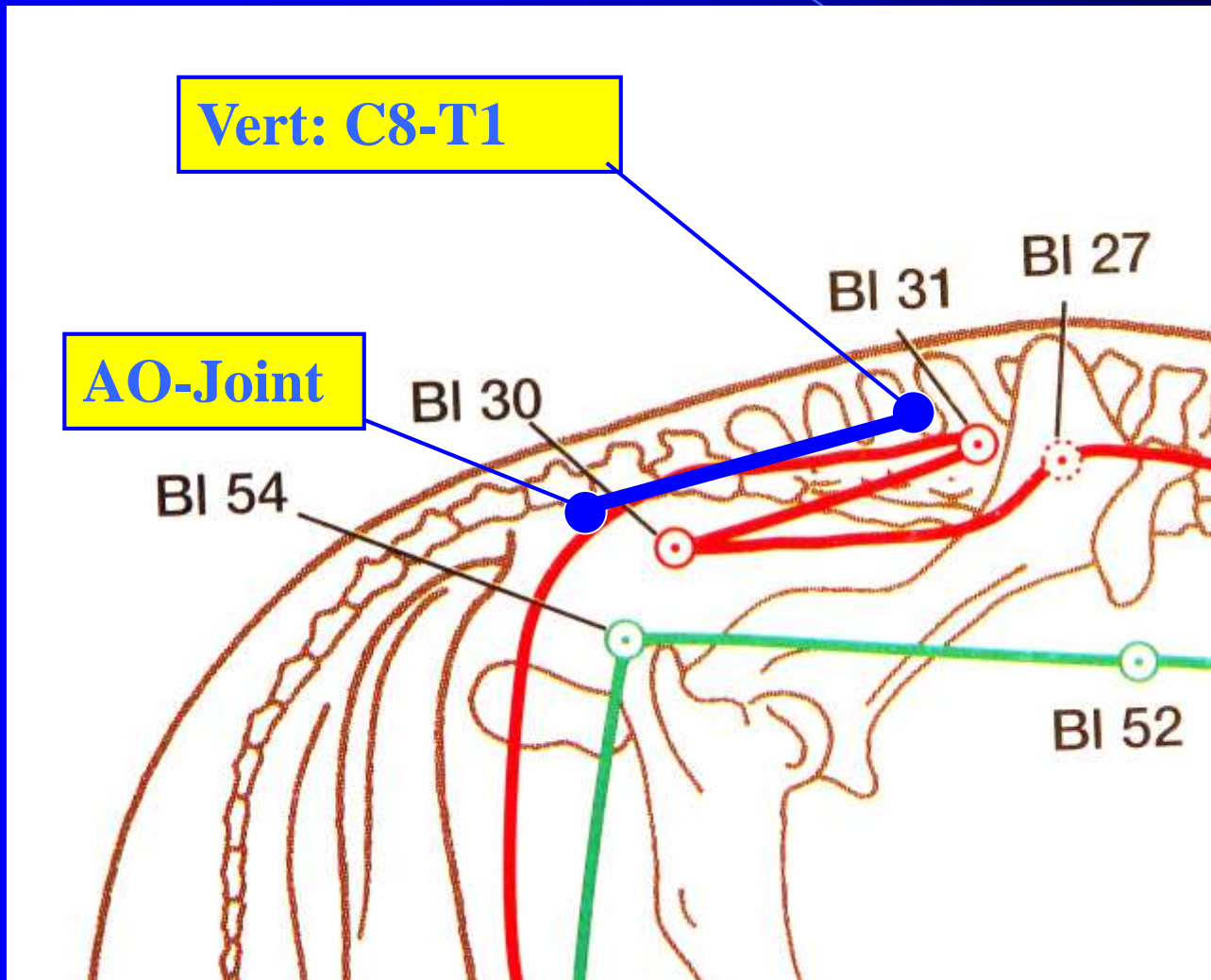


Diagnostical Points at the 5th Limb (Head & Neck) and at the Hind Limb (Cain)



Mirror Pts of the Neck

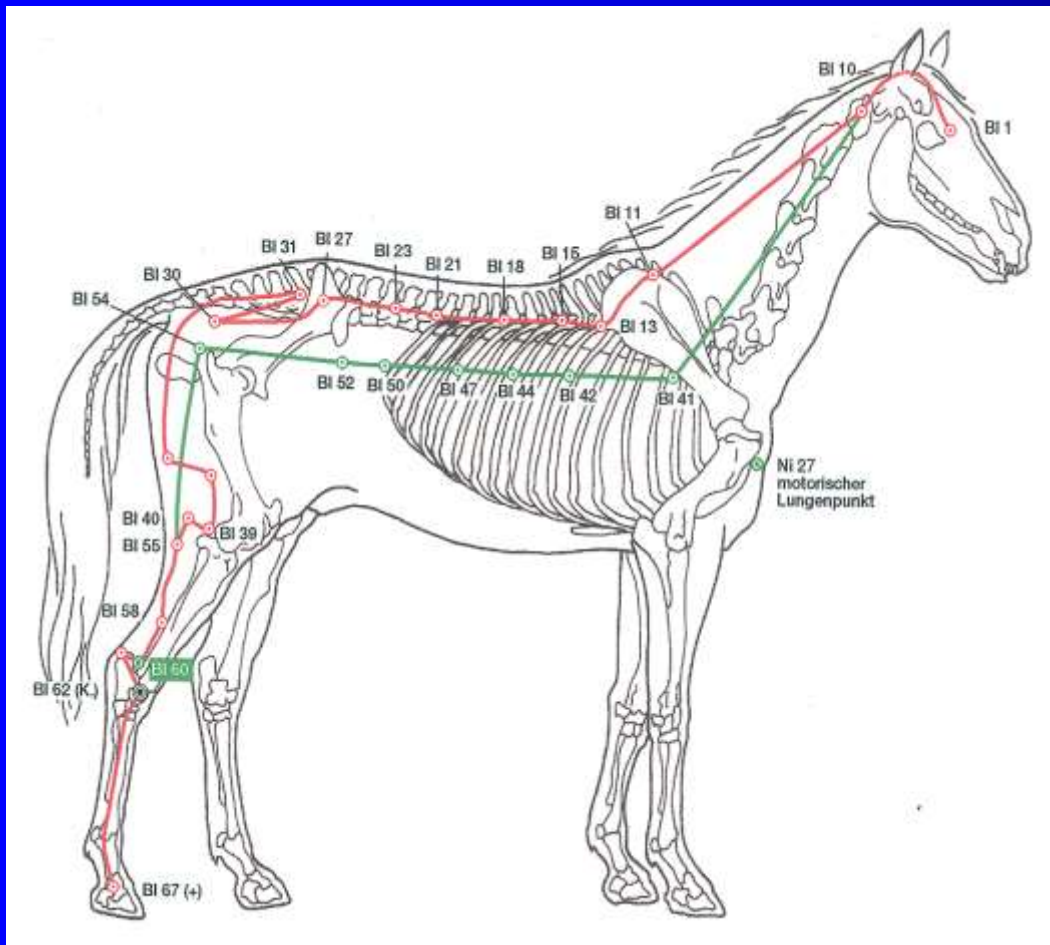
May be compared with the Huatuojiat Pts



Carrot Therapy



Shu – Mo - Technique



BL 11	Bone	GB 39
BL 13	LU	LU 1
BL 15	HT	CV 14
BL 18	LIV	LIV 14
BL 19	GB	GB 24
BL 20	SP	LIV 13
BL 21	ST	CV 12
BL 22	TH	CV 5,7,12,17
BL 23	KI	GB 25
BL 25	LI	ST 25
BL 27	SI	CV 4
BL 28	BL	CV 3



Extended Shu - Mo Technique

- In animals especially with muscular problems, you deal with the complete Shu-Mo technique. We call it Forceps-Needling
- That means that you involve additionally to the traditional Shu-Mo technique the **outside BL Meridian**, which represents the muscular aspect of the body
(Rule: inside BL-Pt + 29=outside BL point)



E.g. In a thoroughbred horse after a three days eventing competition

- Spleen Deficiency: BL20 is very tender
- + **BL20** Ass. Pt. left side (Spleen location)
- – **BL20** Ass. Pt. right side (opposite side of BL Meridian (Res. Suprarenin®))
- + **LV13** A. Pt. right side (Res. Serotonin®)
- – **LV13** A. Pt. left side
- + **BL49** right side
- – **BL49** left side

+ means **Tonification**
– means **Sedation**



Ting - Toni - Rule

- Qi Deficiency in that meridian
- Problems with the assigned or allocated organelles. e.g. LV: tendons, ligaments, eye, hoof, birth, anger, rage, fury
- Tonify the Tonification Pt of that meridian, moxa, mesotherapy
- Add the corresponding Ting Pt at the coronary band of the hoof
- Add additionally the corresponding Reunion Pt (Meeting Pt): GB13, GB22, SI19, CV03



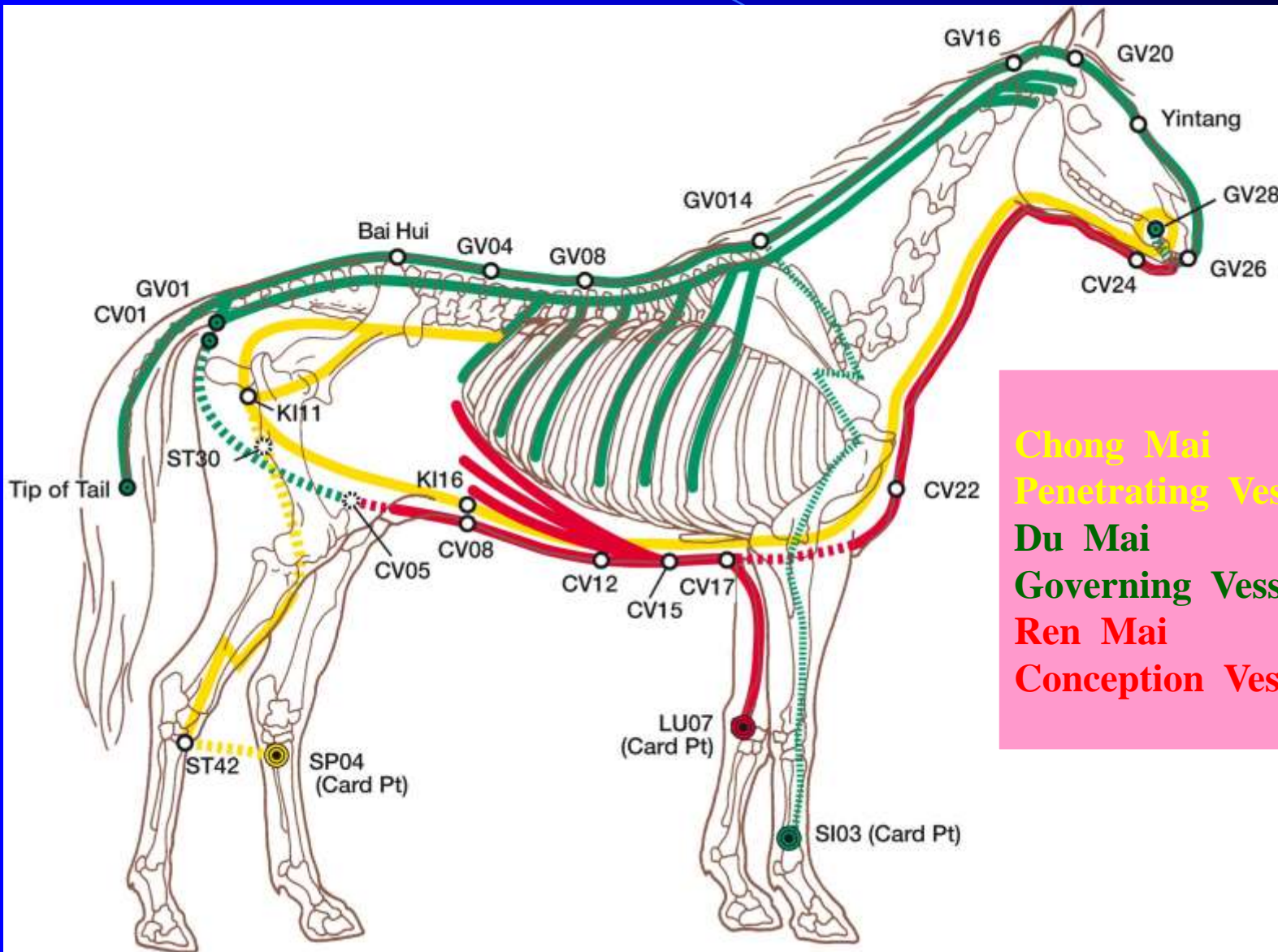
Ting – Toni - Points

- | | | |
|--------|-------|--|
| ● LU09 | LU11 | ● Very often used, COPD, asthma |
| ● LI11 | LI0 1 | ● Shoulder problems, immune def. |
| ● ST41 | ST45 | ● Often used, ammonia pollution |
| ● SP02 | SP01 | ● Pd & Formaldehyde pollution |
| ● HT09 | HT09 | ● Magnesium Pt |
| ● SI03 | SI01 | ● Colics |
| ● BL67 | BL67 | ● Very seldom used (cystitis) |
| ● KI07 | KI01 | ● Joint problems, arthrosis |
| ● PC09 | PC09 | ● Crataegus Pt |
| ● TH03 | TH01 | ● Cortisol Pt, arthrosis |
| ● GB43 | GB44 | ● Hip problems, arthrosis |
| ● LV08 | LV01 | ● Utmost important pair !!!, hoofs, tendons, ligaments |

Cheque other options

- **Disturbancy focus, scars, abcesses, sinusitis, itch, worms, fodder, stable, owner**
- **Meeting Pts: Three YIN, Three Yang PC05 / SP06; TH08 / GB39**
- **ASHI Pt, very painful local Pt (Res Dolantin®)**
- **Trigger Pt: Mesotherapy**
- **Cardinal Pts: Mobilisation of ancestral Qi**
- **Micro-Cosmic-Orbit: SP04, SI03, LU07**

Micro – Cosmic - Orbit



Chong Mai
Penetrating Vessel **SP04**
Du Mai
Governing Vessel **SI03**
Ren Mai
Conception Vessel **LU07**



- **The Middle of the body:**

Navel, EFA`s

Axis GV04 \leftrightarrow CV08, Moxa on GV04

Dai Mai (Girdle Vessel): GB41

- **The Global YIN: SP21**

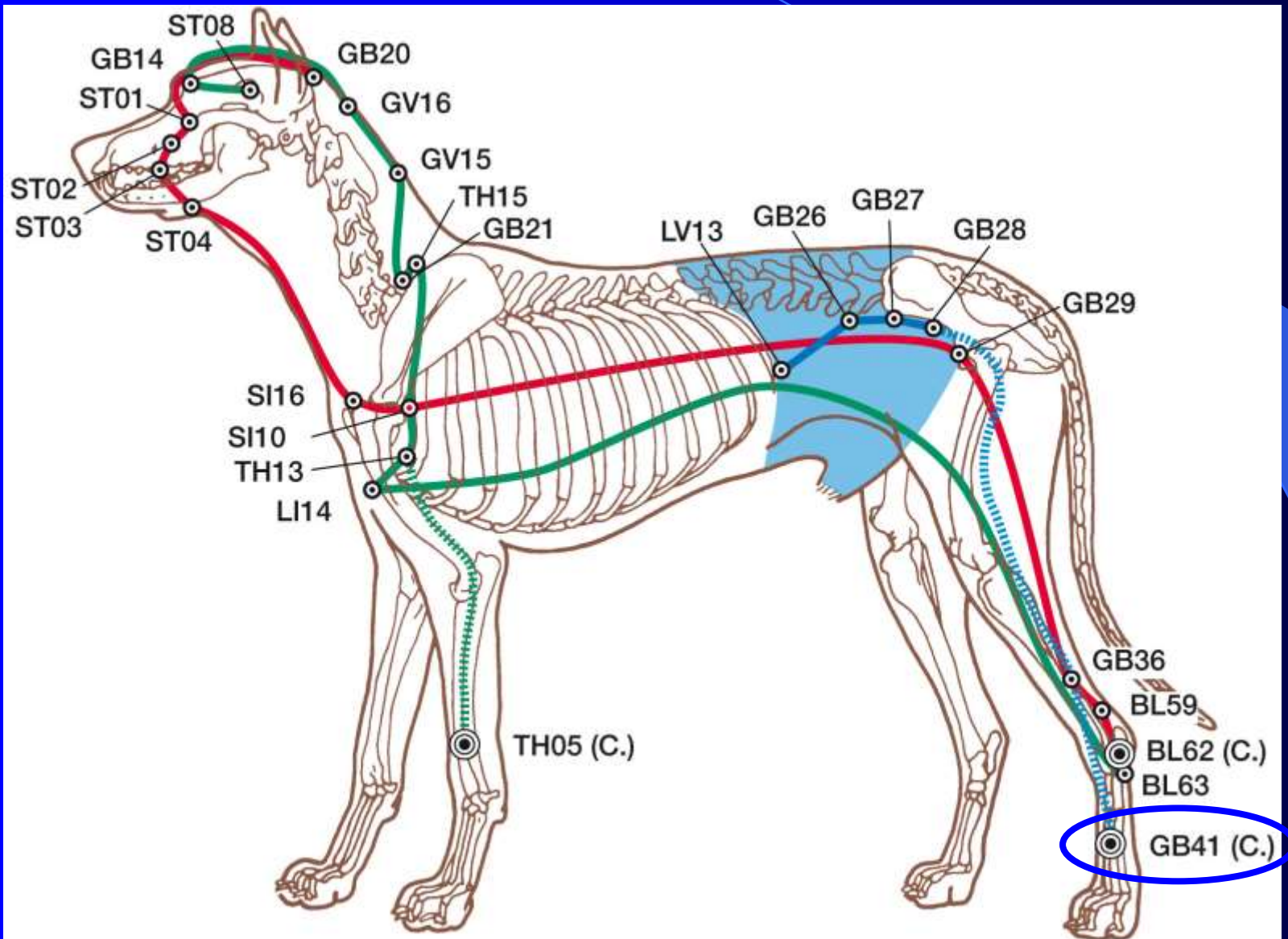
- **Physiotherapy**

- **Phytotherapy**

- **Oligotherapy, etc.**



Girdle Vessel – Dai Mai – GB41

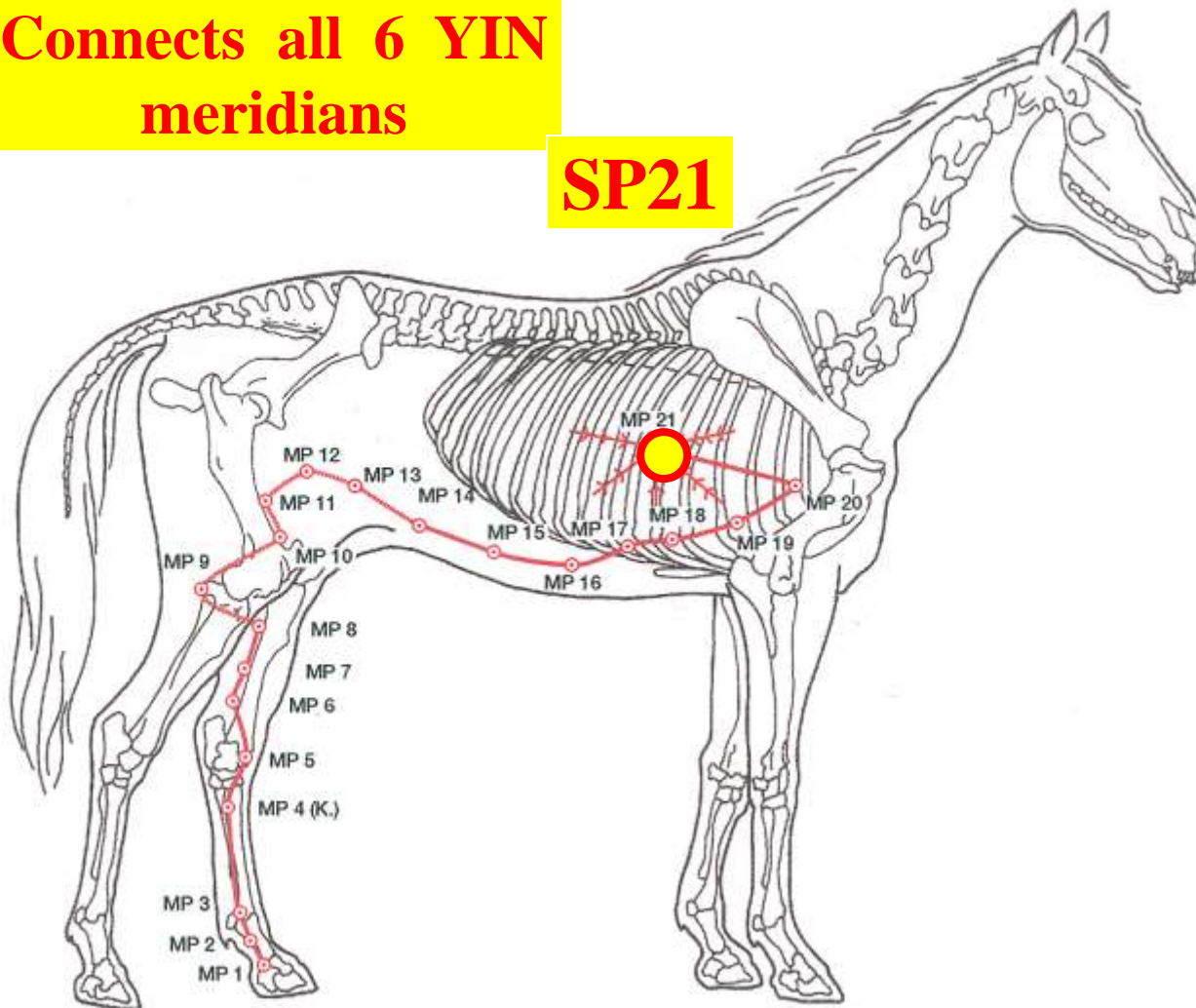




Spleen Main Channel - Big LUO SP21

Connects all 6 YIN meridians

SP21



Fill up with Cosmic Qi



Success in Harmony

